



Eifers Critical works Simplified

Eifers

SK210

Eifers™

CAPABILITY STATEMENT

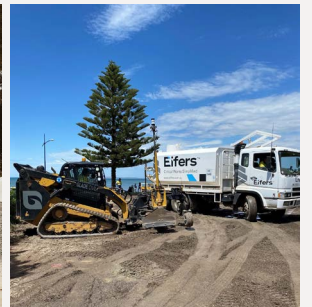
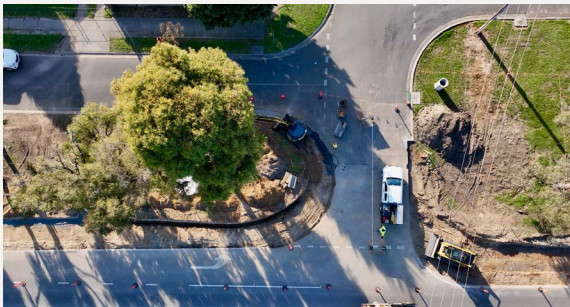
We have capability with:

AIRPORTS

Rapid hardening
Asphalt
Re surfacing
Crack Chasing

CIVIL

Roads
Hardstands
Carparks
Drainage
Shared user Paths
Public Lighting
Earthworks



As one of Australia's leading time critical civil concrete contractors with a fleet of 5 Volumetrics with multiple skilled operators, we have the unique position of being the chosen delivery partner for joint venture projects where engaging the right machines, methodology and manpower to execute major scale civil works is now part of our daily workflow.

Our team is highly skilled and this is evident through the outcomes of the multiple projects we have undertaken over the past few years as we have grown. Being viewed as a trusted partner of Fulton Hogan on the HESC Airport projects in Melbourne has enabled us to continue to provide excellent service, increase our throughput, team numbers as well as the size of our asset pool.

EXECUTIVE SUMMARY

Experience

Based in Melbourne Eifers™ are a civil construction company with a specialist focus on time critical concrete works.

Eifers™ are experts in time-critical civil construction works, with a specialised focus on rapid deployment of concrete technologies. Our approach to materiality, equipment and methodologies save our customers time and decrease downtime so they can deliver their projects sooner.

We have extensive experience working across a range of industries for public and private sector clients which has included working on major projects on Airfields, Rail and Roads. We work on Critical Infrastructure, Urban Landscapes and deliver Expedient Pavements and other projects across the Civil Engineering sector.

Our expertise in time-critical deployments makes Eifers™ a trusted, reliable and respected project partner across these sectors and industries.

Methodologies

Eifers™ employs agile methods to expedite safe and cost-effective outcomes for our clients. We assess the nature of the project, including time, budget and other constraints, and map out the mix of materials, equipment and methods our team can use to deliver an optimal outcome for you.

Materiality

Eifers™ utilises the most effective time-critical concrete products to provide speed and quality for all projects. We carry a range of the most advanced concrete and related products available on the market today, which includes polymer technology to attend to cracks in concrete slabs and we have a lightweight pumpable product that has inherent strength for those hard to reach cavities.

Machines

Eifers™ utilises state of the art machines and tools to deliver fast, safe and exceptional outcomes for our clients. We have invested in some of the most advanced concrete and construction machinery available, so we can get your job done sooner.

LEADERSHIP TEAM

Leadership

Eifers™ is a family-owned Australian company with an agile and innovative approach to civil construction. Founded by the Eifermann family in 2003 as a small business, which soon grew and now focuses primarily on civil construction and critical infrastructure works.

From humble beginnings Eifers™ has evolved through sheer hard work, determination and tenacity to be a highly respected contractor of choice especially in the time critical civil construction space. Now in their 20th year the journey has been exciting, fast paced and varied.

Part of the growth story that sits around the exponential growth has been the capability and mindset of the leadership team and their vision to become the best at working in time critical environments.

Eifers™ stands apart by being the experts in time- critical concrete works, providing services to public and private sector clients across industries and environments including airports, roads, rail, urban development and critical infrastructure.

With a clear focus on process, systems, safety and the proper use of the correct and best equipment by highly trained and skilled professionals - this is why Eifers™ are where they are today.

Our Commitment to ongoing training within our team has enabled us to scale our operation and ensure our team are inherent problem solvers and understand the risk mitigation and compliant plant and equipment handling.



DAN EIFERMANN, Managing Director

Daniel is one of the co-founders of Eifers™ and our Managing Director. With a Bachelor in Business and Masters in Accounting, Daniel is primarily responsible for the strategy, financial and customer relationship aspects of the business.

He is passionate about growing Eifers™ and continually improving outcomes for clients. He's proud of all that Eifers™ has achieved since starting the business with his father Wayne and brother Matt in 2003. From a three-person operation, Eifers™ has grown to become a business that employs around 40 people and is a leader in delivering time-sensitive services in the critical infrastructure sector.

Daniel strives to ensure we always deliver on our promises to customers. Creating a positive company culture that emphasises trust and mutual respect has been especially important to him. His ambition is for Eifers™ to maintain and advance its position at the forefront of innovation in the rapid deployment of concrete technologies for critical infrastructure and civil construction.

Away from work, Daniel is a keen adventurer who enjoys riding motorbikes and loves camping and travelling with his wife and three young kids.



MATT EIFERMANN, General Manager

Matt is one of the co-founders of Eifers™ and is our General Manager. He oversees operations at Eifers™, including the technical and compliance aspects of the business relating especially to equipment, personnel and maintenance.

He is proud of the way Eifers™ has grown from being a family concern into becoming a business that now handles complex multi- million dollar projects for major clients. Matt believes company values like trust, mutual respect and passion have helped the business grow in a positive direction. He gets a great deal of satisfaction from ensuring that our team always delivers the very best outcomes for our customers.

One of Matt's main ambitions is for Eifers™ to continue to lead in providing time-sensitive services in civil construction and critical infrastructure. Technology is playing a vital role in the future of the industry and Matt is committed to furthering our position as the provider of choice for time-critical concrete technologies.

Away from work, he enjoys riding motorbikes, wakeboarding and spending time with his wife and three kids.

Company Values

TRUST | PASSION | SAFETY | MUTUAL RESPECT | FAMILY



Wayne Eifermann
Owner



Chloe Forbes
Office Manager



Vaishali Chhiber
Finance Manager



Sanja Gjorgjieva
Systems Manager



Harshita Guttu
Finance Officer



John Foy
Senior Project Manager



Shaun McParland
Senior Project Manager



Helal Matin
Project Manager



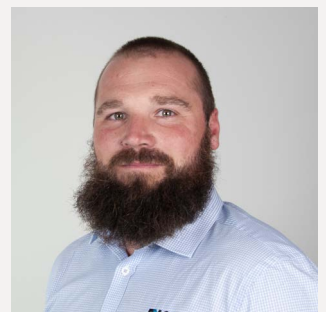
Graham Brooks
Operations Supervisor



Kerry Schwass
Civil Supervisor



Troy Cole
Civil Supervisor



Kane Molloy
Civil Supervisor



Sahyadri Sherigar
Site Engineer



Rudi Grgic
Project Engineer



Anmolkc
Site Engineer



Brodie Warren
HSR Rep & Leading Hand

ADVISORY BOARD



BEN SCHNITZERLING

Ben Schnitzerling is a co-founder and director of Red Fox Advisory. He is a transformational leader who empowers and cares about people. He started Red Fox with partner Anthony Schmidt to create a business that turns complexity into positive outcomes.



ROD NAISMITH

Rod is a Business Services Partner with BDO in Melbourne, having joined as a Partner in 2013, with 20+ years experience. His ability to think 'outside the box' allows him to deliver innovative, yet practical, solutions to his clients.



PETER WILKINSON

Peter Wilkinson is the founder and Director of SamWilko Advisory, a Fellow and Engineering Executive of Engineers Australia and an MBA graduate of AGSM.



IMRAN KHAN

Imran is a Project Director with significant leadership experience in the Construction Industry, and brings over 18 years' experience in major projects as a consultant and contractor.



ANGIE HAMMOND

Angie is a growth advisor with 25 years of experience working with Small Businesses across Australia. The Founder of Garnish Marketing, a boutique marketing consultancy established in 2006, she has helped hundreds of companies to scale.

OUR HISTORY



2003

Started out mowing lawns & cleaning services

2004

Commenced domestic landscaping works



2006

First excavator purchased to expand capability to excavations and complimentary landscaping division

2007

GFC hit - purchased a larger excavator to work on future flow channel relining project.
Built pools, bush clearing works after the fires



2009

Commenced commercial landscaping works for the the Building the Education Revolution (BER) Program.
Started working on sports fields, railways and minor civil works.

2010

After doing major time critical works with another Civil company we purchased our own Volumetric mixer



2013

Worked as the subcontractor on the largest HESC project in the country, but also continued to grow Civil Construction division

2014

Started building our integrated management system to CCF standards



2015

Commenced directly working for Melbourne Airport in minor maintenance works

2016

Became VIC Roads Pre Qualified to R1, B1, F2
Continued to grow our civil construction and HESC market



2017

Started our largest Civil Construction project at WebDock West Wharf,
Lighting Upgrade - Port of Melbourne.
Head Contractor for Hume City Council completing a 2km Metalink Linear Path winning 'Healthy Active by Design' award, Planning Institute of Australia.

2018-2020

Completed numerous civil construction projects as head contractor whilst continuing to work for larger Tier companies



2020

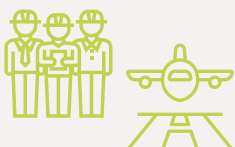
Expanded our Integrated mgmt system to become accredited to ISO triple Cert 9001/14001/45001

2021

Introduced to Fulton Hogan and started a partnership that is known as Engineered IQ



ENGINEERED IQ
END-TO-END CONSTRUCTION SOLUTIONS



2023

Head Contractor on numerous Government authorities and large private entity projects. Secured with our partnership Engineered IQ the largest ever HESC project in Australia of over 4000m³ and 8000m² of pavement replaced on the main 16/34 Runway and associated taxiways and aprons at Melbourne Airport.

Eifers™ is a family-owned Australian company with an agile and innovative approach to civil construction. Founded by the Eifermann family in 2003 as a small business, we soon grew and now focus primarily on civil construction and critical infrastructure works.

We have evolved from a three-person operation into a business with around 40 employees and we also create many opportunities for contractors and businesses in our community. We have progressed from the smaller projects of our early days to become the time-critical contractor of choice for public and private sector partners on multimillion-dollar projects. Our passion for continual improvement and innovation has driven this growth.

Every project we undertake is an opportunity to learn and grow: From working in the South Australian outback on the Moomba Big Lake Gas Facility to cutting edge airport apron and runway concrete slab removal and replacements at Melbourne Airport. We've taken lessons from every project we've completed and applied them to what we do next. We're proud of our history because it makes us who we are today: passionate, innovative, and always determined to provide our clients with value for money and outstanding results.



SERVICE DELIVERY

We are committed to delivering projects to the highest standard, on time and without disruption.

Based in Epping in Melbourne for the past 20 years the Eifers™ team have been working on civil construction projects working extensively with the airports, roads, transport and civil sectors.

Eifers™ uses Best practice methodologies to deliver on their projects which includes the adherence to often stringent compliance standards and WHS measures. We have tight processes and procedures that ensure that every work site is safe and compliant. We ensure that we adhere to the National Construction Code.

Our sub contractors all work in adherence to our set standards as we are an organisation focused on the safety of our people and the environment in which we work.

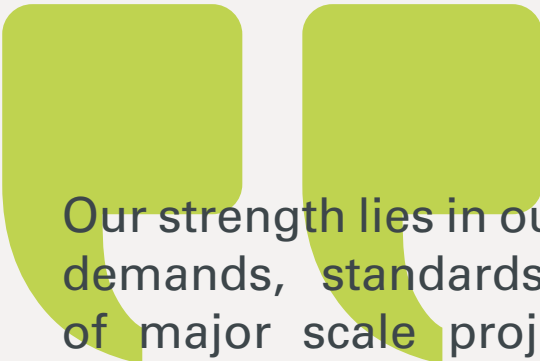
This is why Eifers™ incident record on site is near zero and why we are entrusted by clients to manage large scale civil projects across the country.

We have the capability to return a project back to the client overnight using our rapid hardening concrete technologies and methodologies. We have proven this with major scale works at Melbourne Airport as part of the Engineered IQ team.

With our Civil works on Roads we manage road closures, all permits, and traffic management. We are prequalified to R3, B2 and F5 with Aust Roads.

We have extensive experience in the development of Carparks which includes managing the shared user paths and public lighting as well as all drainage and any required pits, rock beaching and stormwater requirements.

We offer an end to end solution for a construction project,



Our strength lies in our ability to meet the demands, standards and expectations of major scale project works such as Airports, Roads and Transport Corridors. Our commitment to delivering high quality outcomes coupled with our strong communication ethos has elevated our position as the contractor of choice when it comes to specialist concrete civil works across the country. “

- Dan Eifermann, Managing Director

THE EIFERS™ SAFETY JOURNEY

At Eifers™ Safety matters

Our foremost priority is the wellbeing and safety of every individual on site, ensuring they return home safely to their loved ones. This is not just about meeting standards, but about genuinely caring for our people and our partners.

At Eifers™, we understand that the perfection of a safety culture is a continuous journey, not a destination. We consciously foster a robust culture of safety within Eifers™, where every team member is empowered to prioritise safety above all. Our collective commitment to safety as a team means that we embody the motto “The standard you walk past is the standard you accept”.

Enhancing our Safety Culture

We believe in being a responsive and responsible company, especially when it comes to the safety and well-being of our team and partners.

Eifers Safety Always



How we keep our projects and team safe

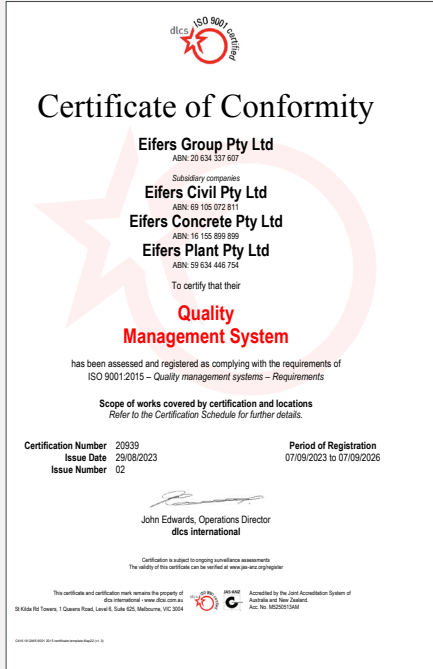
- Pre Qualified to AustRoads R3, B2, F5
- Triple Certified - full Quality Management System
- WHS systems and procedure in place with at least one person responsible for adherence on site at every shift
- SOPS on all projects
- SWMS for all projects - Fill in for every job
- Onsite Inductions - for every project
- Morning Toolbox pre start meeting
- Project mgmt plans
- Quality mgmt plans
- Safety plans
- Superintendents / Supervisors on site
- Safety Officer - Brody Warren leading hand / health and Safety officer HSR
- Sanja Gjorgjieva - QSE

At Eifers™ Family values are one of our core focuses and so we do everything we can to keep our people safe so that everyone goes home safely at the end of every shift.

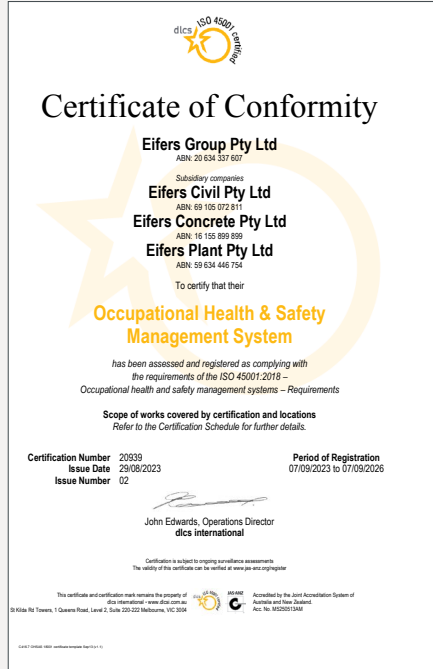
We ensure that our team and all subcontractors are kitted out with the relevant PPE for each job. This includes Harnesses, Hearing protection, Hardhats, High Viz PPE Clothing, Safety Glasses, Respiratory Masks and Boots.

COMPLIANCE & ASSURANCE

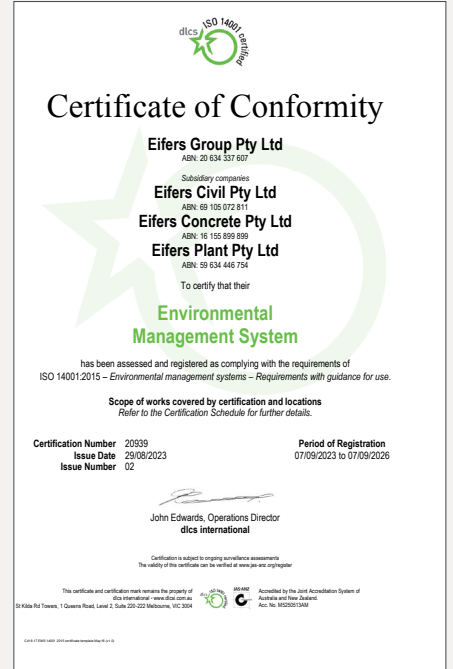
Eifers™ engage in works in highly regulated environments, we are compliant with the **Building Code 2016** and **Fair Work Act 2009**. We are members of the Master Builders Association, the Civil Contractors Federation and Victoria Building Authority, we value Quality Management and are triple certified and hold DLCS Certificates of Conformity. Eifers™ has AustRoads National Prequalification for civil road and bridge construction (R3, B2 & to financial level F5).



DLCS Certificate of Conformity
AS/NZS ISO 9001:2015



OH&S Management System
AS/NZS ISO 14001:2015
Environmental Management System



Quality Management System
AS/NZS ISO 45001:2018

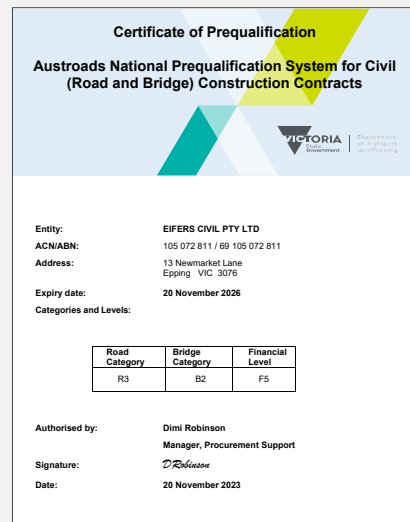


AustRoads Pre-qualification

R3 Road Category, B2 Bridge Category, F5 Financial Level

Victoria Building Authority

Earthworks & Excavation Work, Construction of Retaining Walls Work, Construction of Swimming Pools & Spas, Construction of Structural Landscaping



ASSOCIATIONS & MEMBERSHIPS



TRAINING

We regularly undertake Functionality reviews, this means that we assess to see that our team are in the best roles, upskilled as required, all tickets and licences are current and we expand and contract as required for the operation of the business with the contracts we are currently undertaking.

This level of assessment allows us to manage our job management and forecasting and ensures we deliver accurate project estimates to our clients.

Mandatory Training

- First Aid training - every 2 years
- CPR - annual
- All Construction Equipment training for every user is current and revised as required
- Professional training for admin staff
- Hazard awareness training onsite by HSR officer
- Working from heights training as required
- Dogging Licence - CPCCLDG3001 Licence to perform Dogging

SUSTAINABILITY

At Eifers™ we believe that the term “sustainability” is as much about the longevity of the business as much as it is about the impact that the business operations have on the planet.

This is why we manage our estimates and subsequent projects with precision, because we know that waste can come in the form of materials, time and effort and that all equates to cash flow.

LESS WASTE OF MATERIALS

Our estimates are actual because our ordering process is accurate, this means we order what we need and not more than that.

Our Volumetric Mixers help us to waste less as the mix is pre set and quantities are accurately added to the machine prior to leaving the yard.

LESS TIME WASTE

Our fleet of Volumetric Trucks allow us to respond quickly, be agile in our approach and ensure that the project is completed with minimal disruption to the worksite. Because we mix out concrete as it is required to exact proportions we negate the need to go back and forth to the batch plant. This means we have less truck trips, we burn less fuel, we are faster and the mix is consistently the same thanks to the technology on board the Volumetric trucks.

Because we continually and incrementally work on our processes with our functionality assessments - we do our utmost to avoid duplication. We streamline our operations where possible using systems and by upskilling our team regularly.

We are conscious of downtime and have the foresight to move resources to other projects so we can ensure that every asset is well utilised.

We have a 28% asset utilisation rate which is higher than most industry contractors.

BEST PRACTICE AND BEST CHOICE OF MATERIALS

We use our best endeavours to use sustainable products on our projects and work with design engineers to ensure that these products are considered

Ecofil -The lightweight fill for tight spots

Ecofil is the ideal lightweight concrete solution for rapid and workable application. It's an advanced polymer-based fill that is cost effective and eco-friendly, and is used as an alternative to traditional filling methods and concrete, especially in hard to reach cavities where more technical excavations would otherwise need to be done.

- Less risk in the set up
- Less excavation work
- Less materials used
- Easily pumped across long distances
- Ecofil is highly flowable and stable
- Self Levelling
- Excavatable
- Perfect for time-critical applications and for when site access is limited

The lowered cement content in Ecofil makes it an environmentally friendly alternative to traditional fill options. Minimal mobile plant movement also reduces the overall carbon footprint. Its composition is environmentally inert.

Other sustainable practices at Eifers™

- We recycle where we can
- Pallets from cement deliveries are responsibly recycled
- We have Solar Panels on our roof

Eifers™ strive to achieve as close to a Net Zero impact as possible

CASE STUDY - RYE PARK WIND FARM

Project: Rye Park Wind Farm

Scope of works: Supply High Early Strength Concrete on site for 66 pole foundations

Main Contractor: Stride Reinforcement

Value of works: \$454,644

The Rye Park Wind Farm is located to the north of Yass and east of Boorowa, New South Wales, on the edge of the Southern Tablelands and the South-West Slopes near the township of Rye Park.

Eifers™ were engaged by Stride Reinforcement to produce HESC onsite for the transmission pole foundations at Zenviron's Rye Park Wind Farm Project in NSW, Australia.

During our mobilisation the raw materials were calibrated to our high quality assurance processes. Eifers™ produced over 400m³ of fresh 32mpa structural concrete designed & certified by Adbri Limited.

The site was set up with our Bay-Lynx Manufacturing Inc. and CemenTech Inc / Antec Concrete Equipment volumetric batch trucks, mobile cement silo and conveyor system.

The benefits of volumetric batch trucks are that we can deliver fresh, consistent concrete on demand and offer different ranges of mix designs that are readily available with no waiting time.

When Stride Reinforcement were asked about working with Eifers™ they stated:-

"The Eifers™ guys were very professional, quick and easy to work with. The biggest win from a constructability point was that their process using Volumetrics was very convenient and efficient. Using Volumetric trucks meant that we had fresh concrete on call, opposed to waiting and relying on others who use a mobile batch plant to mix and deliver. We were very happy with the outcome and working with Eifers™ was a breeze."

This kind of work in remote Australia is perfect for us at Eifers™ as we have the capability and equipment to manage these jobs using our volumetric batch trucks.



We were very happy with the outcome and working with Eifers™ was a breeze."



CASE STUDY - MELBOURNE AIRPORT

Project: DP3 - Melbourne Airport Sierra Taxiway

Client: APAM

Main Contractor: Eifers™ Pty Ltd

Value of works: \$1,099,866

Variations: \$41,402

Revised Contract Sum: \$1,141,268

Eifers™ has recently been engaged by Melbourne Airport to undertake extensive pavement rehabilitation repairs on Taxiway Sierra as part of the MAPMP 2.0 – DP3 Stage 1 Enabling Works. The Project Team included External Project Managers DCWC and Design Engineers AECOM.

The proposed MAPMP 2.0 - DP3 Stage 1 Enabling Works include improvements to Taxiway Sierra (between Taxiways Juliet and Kilo) to support aircraft operational use, in preparation for the Taxiway Alpha reconstruction.

Scope of works for DP3 Stage 1 includes:

- Slab replacement works to defective concrete pavement areas
- Pavement repairs to patches (identified as having damage and structural distresses along Taxiway Sierra.)

The project requires Eifers™ to:

- Undertake 5 x full depth concrete slab replacements consisting of 150mm wet lean mix course layer and 550mm thick Portland Cement Concrete (PCC)
- 100mm deep trench repairs using hot mix asphalt (approx. 86m²)
- Concrete joint sealing and spall repairs using Eifers™ preferred products; DPR FastPatch & EJC 25 sealant.

Additionally, to support aircraft operations along Taxiway Sierra, AGL reinstatement and new line marking have been included within these works.

Eifers™ executed and delivered the project on time and within budget.



CASE STUDY - MITCHELL SHIRE COUNCIL

Project: Mitchell Shire Council - Seymour Resources Recycling Centre

Outline the scope of the project: Civil infrastructure project, Roadwork & Drainage

Main Contractor: Eifers™ Pty Ltd

Value of works: \$\$1,005,286

Variations: \$433,343

Revised Contract Sum: \$1,438,629

Eifers™ was awarded the construction of new 560m long medium duty asphalt road by Mitchell Shire Council for access into their new Seymour Resources Recycling Centre and associated business in the area in early 2022.

The project is separated into two portions:-

SP1

Included the work on the internal road which involved:

- Earthworks for subgrade & swale drains
- Concrete box culverts
- The placement of over 4380 tonnes of crushed rock pavement.
- 7mm Primerseal
- SAMI seal
- 1007 tonnes of heavy and medium duty asphalt supplied by Downer
- Line marking & signage.

SP2

The intersection of Seymour Tooborac Road & Government Road which involved:

- Earthworks for subgrade & swale drains
- The placement of over 1586 tonnes of crush rock pavement
- 14mm/7mm Dual Coat GRS seal
- Public lighting installation
- Line marking
- Signage and traffic management

During the construction there were numerous stakeholder management challenges with another internal project being constructed, public traffic heading to the current landfill site and a community club.

Added to this the significant weather events has made this a quite a challenging project and our onsite team has performed extremely well.

As always great support from our subcontractors Elite Roads at Glade Civil Pty Ltd



CASE STUDY - MAPMP GATES 27 & 39

Project: MAPMP Gate 27 & 39

Outline the scope of the project: Distressed road pavement repairs - Concreting & Asphaltting

Main Contractor: Eifers™

Value of works: \$384,426

Variations: \$37,115

Revised Contract Sum: \$421,541

In 2022 Eifers™ was awarded and commissioned by APAM to carry out essential pavement maintenance work at Melbourne Airport's Gate 27 and Gate 39 entrance.

The project brief required demolition and reconstruction of existing damaged asphalt pavement areas and demolition and reconstruction of existing damaged concrete pavement areas to be replaced with Rapid-hardening concrete (Concretum).

Scope of Works Gate 27

- Scanning and proving for underground services
- Profile 603m² existing damaged asphalt areas
- Prepare, proof-roll, install steel reinforcement and replace with 221m² Rapid-hardening concrete
- Prepare, proof-roll and replace with 221m² new asphalt
- Return worksite to the client for use at end of each shift

Scope of Works Gate 39

- Scanning and proving for underground services
- Profile 185m² existing damaged asphalt area
- Prepare, proof-roll, install steel reinforcement and replace with Rapid-hardening concrete
- Return worksite to the client for use at end of each shift

1. Asphalt Replacement

Eifers™ was tasked with removing and replacing approximately 400m² of damaged asphalt pavement to a depth of 200mm. This involved the removal of the existing damaged asphalt using a profiler, followed by the installation of new asphalt in two layers capable of withstanding heavy traffic.

2. Concrete Replacement

Eifers™' expertise in rapid-hardening concrete (Concretum) was leveraged for the replacement of damaged pavement covering an area of 250m². Similar to the asphalt replacement, this process included the removal of 200mm of asphalt using a profiler. Subsequently, Eifers™ supplied and installed reinforcement, followed by the application of new rapid-hardening concrete. Impressively, this concrete could support traffic just two hours after pouring.

3. Delivery

Eifers™ executed the project with exceptional skill and a highly proficient team, resulting in the successful completion of the project. Importantly, they not only met but also surpassed the project's time and budgetary constraints, demonstrating their commitment to excellence and efficiency.



CASE STUDY - OLYMPIC PARK CARPARKS 1 & 2

Client: Banyule City Council

Main Contractor: Eifers™

Value of works: \$1,047,000

Duration: 6 months (completed May 2022)

Eifers™ were awarded the contract to construction additional carparking at two adjacent locations within Olympic Park for Banyule City Council for a total of 84 No. carparking bays to provide improve access to existing recreational facilities.

The project included earthworks, construction of carparking, installation of drainage works, kerb & channel, new lighting infrastructure, landscaping, garden beds, tree planting and fencing.

Scope of Works

- Earthworks, excavation and subgrade stabilisation works
- Construction and installation of stormwater drainage, drainage pits, agricultural drains, kerbing, electrical conduits and installation of light poles
- Construction of approx. 2,800m² of new road pavement including placement of base course and wearing course asphalt
- Installation of line-marking, wheel-stops, signage and fencing.
- Landscaping works, tree planting and reinstatement of all disturbed areas



KEY PLANT & EQUIPMENT

Eifers™ utilises state of the art equipment and tools to deliver fast, safe and exceptional outcomes for our clients. We have invested in some of the most advanced concrete and construction machinery available, so we can get your job done sooner.

Volumetric mobile mixers.

Virtual onsite batch plants ready for remote and rapid pour projects. Fresh and consistent concrete delivered in precise volumes onsite. They also function as onsite pugmills to stabilise an array of materials. Our volumetric Mobile Mixers mean no waste, no wait times, and no logistical errors. We have 5 volumetrics in total.

Eifers™ are the Australian Distributor for Bay Lynx Volumetrics
We have 2 of the Bay Lynx Volumetrics ourselves

Core drilling equipment

We use a variety of Minnich pneumatic drilling rigs. Minnich is an international industry leader in concrete core drilling and concrete vibrator equipment.

Full range of vehicles, machinery and tools.

- 4 x 20 tonne range excavators with associated attachments
- 2 x 13 tonne excavators with associated attachments
- 4 x 5 tonne excavators with associated attachments
- 2 x Pozi
- 2 x Bobcats
- Standard and specialised excavation and earthworks
- Saw cutting equipment
- Trucks/Trailers
 - 2 x Water Carts
 - 3 x Tandems
 - 5 x prime movers
 - 3 x semi tipper trailers
 - 5 x float trailers
 - 2 x Crew equipment truck
 - 5 x Volumetrics
 - 1 x Concrete agitator
 - 2 x Field Service Units
 - 1 x Non-destructive digging unit
- Remote batching and cement storage equipment
- Joint sealing equipment



Ecofil

Ecofil is the ideal lightweight concrete solution for rapid and workable application. It's an advanced polymer-based fill that is cost effective and eco-friendly, and is used as an alternative to traditional filling methods and concrete.

- Easily pumped across long distances
- Ecofil is highly flowable and stable
- Self Levelling
- Excavatable
- Perfect for time-critical applications and for when site access is limited

FastPatch

FastPatch Polymer bonds tenaciously and remains flexible throughout its service life. It cures in just a few minutes, allowing for quick return-to-service times. It is also cold-applied, which makes it safe to use and means it will not push/shove after it is installed.

FastPatch Polymer bonds tenaciously and remains flexible throughout its service life. FastPatch cures in just a few minutes, allowing for quick return-to-service times. It is also cold applied, which makes it safe to use and means it will not push/shove after installation.

High Early Strength Concrete

High Early Strength Concrete is your first choice material for time-sensitive concrete works for civil construction and critical infrastructure projects. High Early Strength Concrete concrete delivers structural strength of 20MPa in just one hour, and its durability and low shrinkage make it far superior to ordinary Portland cement, especially for time-critical applications.

High Early Strength Concrete is a fast-setting concrete ideal for projects that require quick turnarounds and minimal disruption.



PARTNERSHIPS

ENGINEERED IQ - a division of Fulton Hogan



ENGINEERED IQ
END-TO-END CONSTRUCTION SOLUTIONS



Eifers™ are working under a partnership MOU with Fulton Hogan's Engineered IQ division. This partnership has allowed us to expand our works in the airport runway replacement industry, which sees us replacing sections of airport runways overnight using the highest quality cement-based product from Concretum™.

Our Partnership with Fulton Hogan has given us the ability to work on larger scale projects that we otherwise would not be able to tender for alone. This collaboration elevates Eifers™ as the clear choice for HESC airport slab replacement work.

The benefit of using Concretum's rapid hardening concrete product is that operationally, we can open the runway back up in record time and put traffic over the slab within a couple of hours, unlike conventional concrete which can take up to seven days. This HESC is the newest generation of rapid-hardening concrete and has been engineered in Switzerland. Popular throughout Europe since 2004, Engineered IQ has exclusive licence of the product in Australia and New Zealand.

The flexibility of the Concretum product means that we can adjust it to suit weather conditions. This gives us the capability to hand the work area back to our clients for operational use faster than ever before. On an airport runway this is critical, as is the safety and finish of the newly laid section.

This partnership will see Eifers™ working as a trio to deliver all high early strength concrete projects with Fulton Hogan /Engineered IQ whilst using the Concretum products for many years to come.

Fulton Hogan has been delivering high-quality infrastructure across Australia and New Zealand for 90 years. The family-owned business has a strong track record for producing high-quality, complex projects, while addressing the challenges of a rapidly changing world. As part of the company's commitment to tackling sustainability and environmental issues, it has committed to reducing its carbon emissions by 30% by 2030 and has adopted a net carbon zero target by 2050.

With Fulton Hogan's expertise in airport pavement construction, Concretum's expertise in manufacturing the best quality cement products in the world and Eifers™' knowledge, skill and capability to manage projects of this scale in critical time frames, we are collectively working at the forefront of technology in this space.

Eifers™ has the capability to work with rapid hardening concrete products and the labour force and large scale equipment, such as the largest fleet of volumetric mixers in the country, to complete these overnight pours. Eifers™ is setting the benchmark in airport paving tech both now and into the future.

This joint venture illustrates the capability and professionalism required to open up a runway pavement on time and on budget.

"Together, Engineered IQ, Fulton Hogan, Eifers™ and Concretum have created a powerful partnership that combines their knowledge of building infrastructure with cutting-edge concrete solutions to produce projects of extraordinary quality, efficiency, and longevity."

For more information www.fultonhogan.com/engineered-iq/



Eifers™ is the exclusive distributor of Bay Lynx Volumetric Equipment in Australia.

We realised that the Bay Lynx Volumetrics allowed us to pivot into a different type of work and we know that they can allow other civil construction and concrete specialists to do the same.

We offer two types of volumetric mixers: the Standard VCM and the latest Big Rig – the Titan. Eifers™ are the exclusive Australian Distributor for Bay Lynx – the leading Volumetric suppliers globally.



The only way to get the exact right mix and exactly the correct amount is to mix your cement aggregate and water on-site.

For more information visit www.baylynx.com.au

COMPANIES WE HAVE WORKED WITH

PRIVATE CLIENTS



Woolworths



AIRPORT CLIENTS



DEFENCE CLIENTS



(Sale & Townsville)



(Army Base - Puckapunyal)

ROAD AUTHORITIES



PORTS

Port of Melbourne



Eifers™

Head Office

13 Newmarket Lane
Epping VIC 3076
Australia

Regional Office

262 Clarks Rd
Yea VIC 3717
Australia

admin@eifers.com.au
+61 3 9357 6360

www.eifers.com.au