



Project: Rye Park Wind Farm

Scope of works: Supply High Early Strength Concrete on site for 66 pole foundations

Main Contractor: Stride Reinforcement

Value of the job: \$454,644.52

The Rye Park Wind Farm is located to the north of Yass and east of Boorowa, New South Wales, on the edge of the Southern Tablelands and the South-West Slopes near the township of Rye Park.

Eifers™ were engaged by Stride Reinforcement to produce HESC onsite for the transmission pole foundations at Zenviron's Rye Park Wind Farm Project in NSW, Australia.

During our mobilisation the raw materials were calibrated to our high quality assurance processes. Eifers produced over 400m³ of fresh 32mpa structural concrete designed & certified by Adbri Limited.

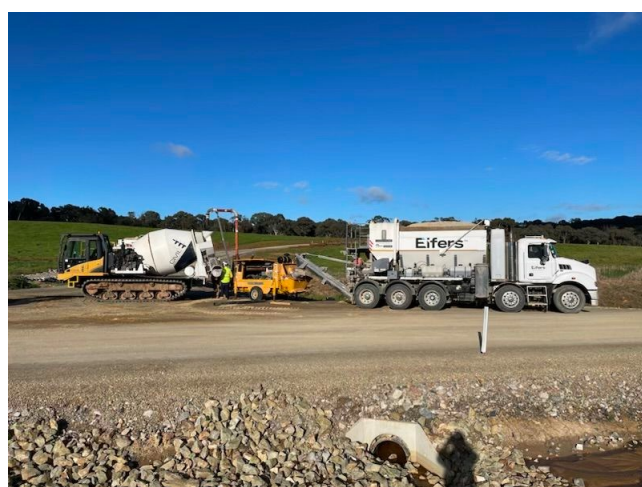
We are currently set up onsite with our Bay-Lynx Manufacturing Inc. and CemenTech Inc / Antec Concrete Equipment volumetric batch trucks, mobile cement silo and conveyor system.

The benefits of volumetric batch trucks are that we can deliver fresh, consistent concrete on demand and offer different ranges of mix designs that are readily available with no waiting time.

When Stride Reinforcement were asked about working with Eifers they stated:-

"The Eifers guys were very professional, quick and easy to work with. The biggest win from a constructability point was that their process using Volumetrics was very convenient and efficient. Using Volumetric trucks meant that we had fresh concrete on call, opposed to waiting and relying on others who use a mobile batch plant to mix and deliver. We were very happy with the outcome and working with Eifers was a breeze."

This kind of work in remote Australia is perfect for us at Eifers as we have the capability and equipment to manage these jobs using our volumetric batch trucks.



We were very happy with the outcome and working with Eifers was a breeze."

- Stride Reinforcement